

\$950,000 - 11645 N State Highway 36, Jonesboro

MLS® #450034

\$950,000

5 Bedroom, 4.00 Bathroom, 4,816 sqft
Residential on 2.46 Acres

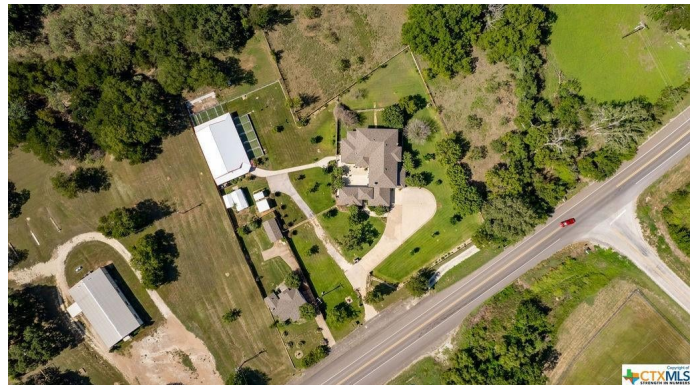
J Daughtery, Jonesboro, Texas

This unique property is a large custom home with an outdoor fireplace, 5 BR, 3.5 B, two living areas, and two dining areas. Covered patio's off the dining room and master bedroom. Two covered balconies. Main home has over 4,800 sq. ft. The guest home has over 1,100 sq. ft. The professional dog kennel is a part of this property. The kennel is 4,000 sq. ft. It has two restrooms, laundry room, office, reception and kitchen area, bath area, and multiple runs. This is two properties sold as one: 11625 and 11645 N HWY 36, Jonesboro, TX. Property sits on close to 2.5 Acres. Spectacular courtyard with outdoor cooking area.

Built in 2004

Essential Information

MLS® #	450034
Price	\$950,000
Bedrooms	5
Bathrooms	4.00
Full Baths	3
Half Baths	1
Square Footage	4,816
Acres	2.46
Year Built	2004
Type	Residential
Sub-Type	Single Family
Style	Spanish/Mediterranean



Status Active

Community Information

Address 11645 N State Highway 36
Subdivision J Daughtery
City Jonesboro
County Coryell
State Texas
Zip Code 76538

Amenities

Utilities Electricity Available, High Speed Internet Available
Features None
of Garages 3

Interior

Interior Carpet, Tile
Interior Features Ceiling Fan(s), Double Vanity, Garden Tub/Roman Tub, Pantry, Separate Shower, Tub Shower, Book Cases, Crown Molding, Dining Area, Entrance Foyer, Home Office, Separate/Formal Dining Room
Appliances Dishwasher, Microwave, Some Electric Appliances, Built-In Oven, Cooktop, Disposal, Double Oven, Multiple Water Heaters, Plumbed For Ice Maker, Range Hood, Water Softener Rented
Heating Central, Electric, Multiple Heating Units
Cooling 3+ Units
Fireplace Yes
of Fireplaces 1
Fireplaces Wood Burning, Outside
of Stories 2
Stories Two

Exterior

Exterior Features Covered Patio, Patio, Balcony, Dog Run, Other, Private Yard, See Remarks
Windows Double Pane Windows, Plantation Shutters
Roof Composition, Shingle
Construction Brick, Other, See Remarks
Foundation Slab

School Information

District Jonesboro ISD

Additional Information

Date Listed August 28th, 2021

Days on Market 1

HOA Fees 0.00

Listing Details

Listing Office UCRE|Hill Country Pros

The information being provided by the Central Texas MLS is exclusively for consumers' personal, non-commercial use, and it may not be used for any purpose other than to identify prospective properties consumers may be interested in purchasing. The data is deemed reliable but is not guaranteed accurate by the MLS.