

\$399,900 - 2405 Alterman Drive, Temple

MLS® #449806

\$399,900

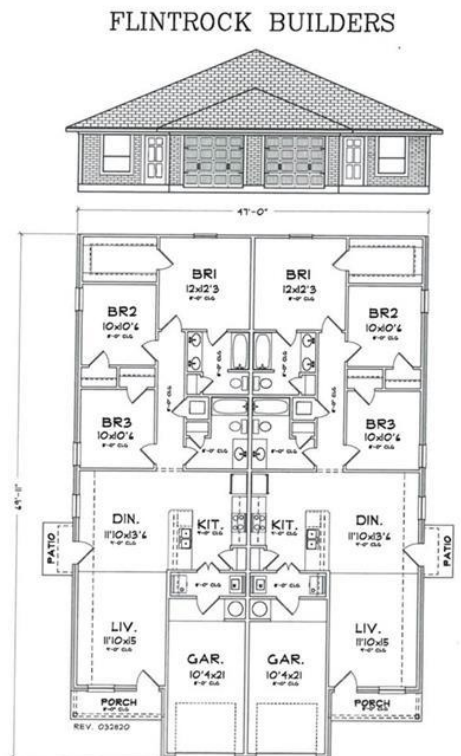
0 Bedroom, 0.00 Bathroom, 2,620 sqft

Residential on 0.19 Acres

Pecan Creek Est, Temple, Texas

FLINTROCK BUILDERS introduces its NEWEST DUPLEX Subdivision. Construction starting SOON! Estimated COMPLETION DATE IS December 2021. Each unit will have 3 bedrooms, 2 bathrooms, and a 1 car garage. Polished floors make for easy maintenance. Countertops in the Kitchen and Bathroom will be solid surface (granite or quartz). The subdivision has a combination of single family and duplexes. These Duplexes won't last long!!!

Built in 2021



BUILDER RESERVES THE RIGHT TO CHANGE PLANS, SPECIFICATIONS, AND PRICES WITHOUT NOTICE.
ALL ROOM SIZES ARE ESTIMATES OF APPROXIMATE SQUARE FOOTAGE. APPRAISAL WILL BE SOLE SOURCE OF EXACT SQ. FT.



Essential Information

MLS® #	449806
Price	\$399,900
Bathrooms	0.00
Square Footage	2,620
Acres	0.19
Year Built	2021
Type	Residential
Sub-Type	Duplex
Style	Traditional
Status	Pending

Community Information

Address	2405 Alterman Drive
Subdivision	Pecan Creek Est
City	Temple
County	Bell

State	Texas
Zip Code	76502

Amenities

Utilities	Cable Available, Electricity Available, High Speed Internet Available, Phone Available, Separate Meters, Water Available
Features	None, Curbs, Sidewalks
# of Garages	2
View	None

Interior

Interior	Concrete, Painted/Stained
Interior Features	Ceiling Fan(s), Double Vanity, Tub Shower, Breakfast Area
Appliances	Dishwasher, Disposal, Microwave, Vented Exhaust Fan
Heating	Multiple Heating Units
Cooling	2 Units
Fireplaces	None
# of Stories	1
Stories	One

Exterior

Exterior Features	Porch, Private Yard
Windows	Double Pane Windows
Roof	Composition, Shingle
Construction	Brick, Masonry
Foundation	Slab

School Information

District	Temple ISD
----------	------------

Additional Information

Date Listed	August 26th, 2021
Days on Market	12
HOA Fees	0.00

Listing Details

Listing Office	The Graham Team
----------------	-----------------

The information being provided by the Central Texas MLS is exclusively for consumers' personal, non-commercial use, and it may not be used for any purpose other than to identify prospective properties consumers may be interested in purchasing. The data is deemed reliable but is not guaranteed accurate by the MLS.