

# \$160,000 - 505 Jorgette Drive, Harker Heights

MLS® #449591

## \$160,000

3 Bedroom, 2.00 Bathroom, 1,283 sqft  
Residential on 0.30 Acres

Alexander Acres, Harker Heights, Texas

Located in a low traffic area in Harker Heights.

Good sized yard for family fun.

Features: microwave, refrigerator, metal storage building, street light in front size of yard, fenced yard, flood lights, and more!

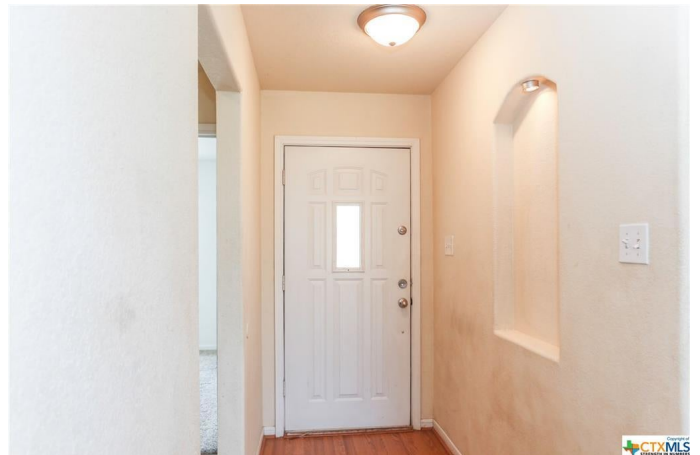
Built in 2005

## Essential Information

MLS® #	449591
Price	\$160,000
Bedrooms	3
Bathrooms	2.00
Full Baths	2
Square Footage	1,283
Acres	0.30
Year Built	2005
Type	Residential
Sub-Type	Single Family
Style	Ranch
Status	Pending

## Community Information

Address	505 Jorgette Drive
Subdivision	Alexander Acres
City	Harker Heights
County	Bell
State	Texas
Zip Code	76548



## Amenities

Utilities	Cable Available, Electricity Available, Phone Available, Water Available
Features	None, Street Lights
# of Garages	2
View	None

## Interior

Interior	Carpet, Laminate, Ceramic Tile
Interior Features	Ceiling Fan(s), Tub Shower, Breakfast Area, Eat-in Kitchen, Split Bedrooms
Appliances	Dishwasher, Electric Range, Electric Water Heater, Disposal, Microwave, Some Electric Appliances
Heating	Central, Electric
Cooling	Central Air, Electric, 1 Unit
Fireplaces	None
# of Stories	1
Stories	One

## Exterior

Exterior Features	Covered Patio, Porch, Storage
Lot Description	87 x 150
Roof	Composition, Shingle
Construction	Masonry, Other, See Remarks
Foundation	Slab

## School Information

District	Killeen ISD
----------	-------------

## Additional Information

Date Listed	August 26th, 2021
Days on Market	10
HOA Fees	0.00

## Listing Details

Listing Office	ERA Colonial Real Estate
----------------	--------------------------

The information being provided by the Central Texas MLS is exclusively for consumers' personal, non-commercial use, and it may not be used for any purpose other than to identify prospective properties consumers may be interested in purchasing. The data is deemed reliable but is not guaranteed accurate by the MLS.