

# \$425,000 - 192 Hartung Cove, Buda

MLS® #448000

## \$425,000

4 Bedroom, 3.00 Bathroom, 2,310 sqft  
Residential on 0.18 Acres

Garlic Creek West, Buda, Texas

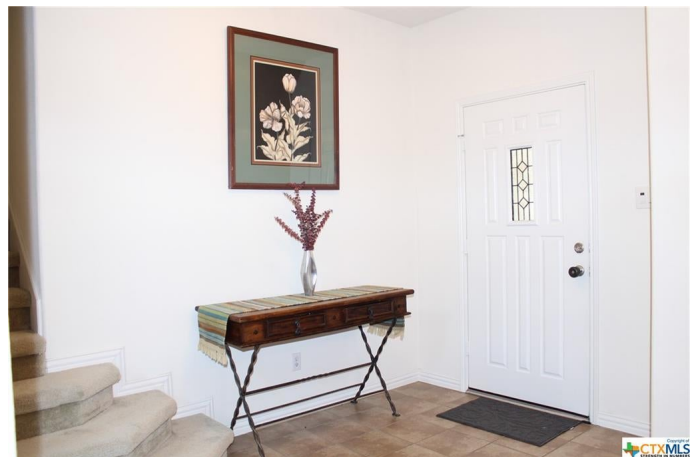
Charming home on the rise at the end of the Hartung Cove cul-de-sac in the Garlic Creek subdivision. The two-story structure includes an oversized two-car garage, two living areas, two dining areas, open concept kitchen with island/breakfast bar, four bedrooms, and three full baths. A secondary bedroom and full bath are located on the main level, ideal for guests. The backyard features a covered patio, dryscape stone and granite gravel terrace, native landscaping and storage shed. A community pool, fitness center, playground and hiking trails are among area amenities.

Built in 2008

## Essential Information

MLS® #	448000
Price	\$425,000
Bedrooms	4
Bathrooms	3.00
Full Baths	3
Square Footage	2,310
Acres	0.18
Year Built	2008
Type	Residential
Sub-Type	Single Family
Style	Traditional
Status	Pending

## Community Information



Address	192 Hartung Cove
Subdivision	Garlic Creek West
City	Buda
County	Hays
State	Texas
Zip Code	78610

### **Amenities**

Utilities	Electricity Available, Natural Gas Available, Cable Available, High Speed Internet Available, Underground Utilities, Water Available
Features	Basketball Court, Clubhouse, Community Pool, Curbs, Park, Playground, Sidewalks, Trails/Paths
Parking	Garage Faces Front, Garage, Attached
# of Garages	2
Garages	Garage Door Opener
View	None

### **Interior**

Interior	Carpet, Ceramic Tile
Interior Features	Ceiling Fan(s), Pantry, Separate Shower, Breakfast Area, Dining Area, Double Vanity, Game Room, Garden Tub/Roman Tub, Home Office, Jetted Tub, Separate/Formal Dining Room, Tub Shower
Appliances	Dishwasher, Cooktop, Microwave, Disposal, Gas Range, Gas Water Heater, Range, Range Hood
Heating	Central, Natural Gas
Cooling	1 Unit, Central Air, Electric
Fireplaces	None
# of Stories	2
Stories	Two

### **Exterior**

Exterior Features	Covered Patio, Porch, Private Yard, Rain Gutters, Storage
Windows	Double Pane Windows
Roof	Composition, Shingle
Construction	HardiPlank Type, Brick, Masonry, Stone Veneer
Foundation	Slab

### **School Information**

District	Hays Cisd
Elementary	Elm Grove Elementary

Middle	Dahlstrom Middle School
High	Johnson High School

### **Additional Information**

Date Listed	August 10th, 2021
Days on Market	17
HOA Fees	115.00
HOA Fees Freq.	Quarterly

### **Listing Details**

Listing Office	Century 21 Randall Morris & As
----------------	--------------------------------

The information being provided by the Central Texas MLS is exclusively for consumers' personal, non-commercial use, and it may not be used for any purpose other than to identify prospective properties consumers may be interested in purchasing. The data is deemed reliable but is not guaranteed accurate by the MLS.