

\$1,482,500 - 5800 Fm 32 Tract 3, Fischer

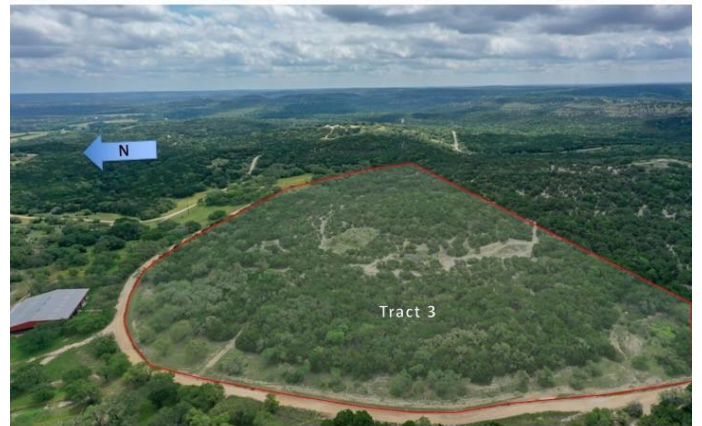
MLS® #447141

\$1,482,500

0 Bedroom, 0.00 Bathroom,
Land on 29.65 Acres

Ranches at Sentinel Peak, Fischer, Texas

Tract 3 at the Ranches at Sentinel Peak is its own private hilltop retreat ~ offering phenomenal 360 panoramic views of the Wimberley Valley and Devil's Backbone. A rare and precious gems in the Texas Hill Country that are becoming nearly impossible to find. Nestled in the Blanco River Valley near Wimberley, TX, and along the fabled scenic route known as the Devil's Backbone, The land is comprised of multiple hilltops affording stunning long-distance views. The community is mostly bordered by conservation land, while the entire northern side is a 500+ acre Blanco River Park owned by Hays County, preserving the beauty of the surrounding tracts for years to come. Conveniently located to Austin and San Antonio, each less than an hour away. Featuring sprawling groves of oak trees & hilltop homesites w/expansive vistas. Offering low taxes with a community wildlife exemption and sensible restrictions. Soon to be fully fenced and gated. Choose your own builder and build on your own timeline.



Essential Information

MLS® #	447141
Price	\$1,482,500
Bathrooms	0.00
Acres	29.65
Type	Land
Sub-Type	Farm/Ranch

Status	Active
--------	--------

Community Information

Address	5800 Fm 32 Tract 3
Subdivision	Ranches at Sentinel Peak
City	Fischer
County	Comal
State	Texas
Zip Code	78676

Amenities

Utilities	Electricity Available
Features	Other, See Remarks, Gated
View	Hills, Meadow, Panoramic

School Information

District	Comal ISD
Elementary	Mountain Valley Elementary
Middle	Mountain Valley Middle School
High	Canyon Lake High School

Additional Information

Date Listed	July 29th, 2021
Days on Market	34
HOA Fees	0.00

Listing Details

Listing Office	Compass RE Texas, LLC
----------------	-----------------------

The information being provided by the Central Texas MLS is exclusively for consumers' personal, non-commercial use, and it may not be used for any purpose other than to identify prospective properties consumers may be interested in purchasing. The data is deemed reliable but is not guaranteed accurate by the MLS.