

\$199,000 - 4000 Stallion Drive, Killeen

MLS® #446730

\$199,000

4 Bedroom, 2.00 Bathroom, 1,638 sqft
Residential on 0.86 Acres

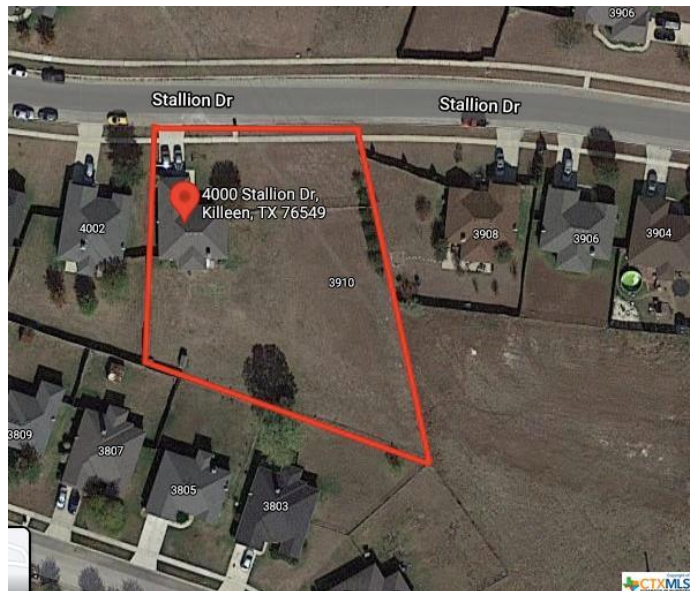
Windfield Estates Ph Five, Killeen, Texas

WOW! Need room to stretch out and PLAY?
This 4 bedroom 2 bath home sits on TWO oversized lots and comes in at just over .85 acres of space! Backyard access to an open field and paved Killeen walking trails. You won't be able to find another home with this much yard space anywhere in the neighborhood. Perfect for pets, entertaining or to park RV/Toys. Home features beautiful ceramic tile flooring throughout, high ceilings, LARGE walk-in closet in MBR, a newer AC unit and a large screened-in back porch with a lifetime warranty on the screens! Close to schools, Ft. Hood and shopping/restaurants. Don't miss out on this UNBELIEVABLE SIZED LOT in KILLEEN!

Built in 2003

Essential Information

| | |
|----------------|---------------|
| MLS® # | 446730 |
| Price | \$199,000 |
| Bedrooms | 4 |
| Bathrooms | 2.00 |
| Full Baths | 2 |
| Square Footage | 1,638 |
| Acres | 0.86 |
| Year Built | 2003 |
| Type | Residential |
| Sub-Type | Single Family |
| Style | Traditional |



| | |
|--------|---------|
| Status | Pending |
|--------|---------|

Community Information

| | |
|-------------|---------------------------|
| Address | 4000 Stallion Drive |
| Subdivision | Windfield Estates Ph Five |
| City | Killeen |
| County | Bell |
| State | Texas |
| Zip Code | 76549 |

Amenities

| | |
|--------------|---|
| Utilities | Electricity Available, High Speed Internet Available, Cable Available |
| Features | Trails/Paths |
| Parking | Attached, Garage |
| # of Garages | 2 |
| Garages | Garage Door Opener |
| View | None |

Interior

| | |
|-------------------|---|
| Interior | Ceramic Tile |
| Interior Features | Ceiling Fan(s), Double Vanity, Eat-in Kitchen, Other, Pantry, Pull Down Attic Stairs, Separate Shower, Split Bedrooms |
| Appliances | Dishwasher, Disposal, Microwave, Oven, Range, Water Heater |
| Heating | Central, Electric |
| Fireplace | Yes |
| # of Fireplaces | 1 |
| Fireplaces | Family Room, Wood Burning |
| # of Stories | 1 |
| Stories | One |

Exterior

| | |
|-------------------|-----------------------|
| Exterior Features | Enclosed Porch, Patio |
| Roof | Composition, Shingle |
| Construction | Brick |
| Foundation | Slab |

School Information

| | |
|------------|---------------------------|
| District | Killeen ISD |
| Elementary | Maxdale Elementary School |

| | |
|--------|------------------------------|
| Middle | Live Oak Ridge Middle School |
| High | Shoemaker High School |

Additional Information

| | |
|----------------|-----------------|
| Date Listed | July 30th, 2021 |
| Days on Market | 24 |
| HOA Fees | 0.00 |

Listing Details

| | |
|----------------|--------------------|
| Listing Office | Jonas Realty Group |
|----------------|--------------------|

The information being provided by the Central Texas MLS is exclusively for consumers' personal, non-commercial use, and it may not be used for any purpose other than to identify prospective properties consumers may be interested in purchasing. The data is deemed reliable but is not guaranteed accurate by the MLS.