

# \$715,900 - 5393 Hartley Square, Schertz

MLS® #446674

## \$715,900

4 Bedroom, 4.00 Bathroom, 3,396 sqft  
Residential on 0.01 Acres

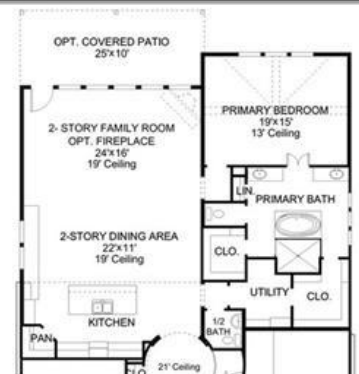
Homestead, Schertz, Texas

Perry Homes New Construction! This spacious design features a two-story rotunda entry. Home office with French doors across from curved staircase. Open kitchen offers corner walk-in pantry, generous counter space and inviting island with built-in seating space. Two-story dining area opens to two-story family room with wall of windows. First-floor primary suite includes bedroom with 13-foot ceiling and wall of windows. Primary bath includes dual vanities, garden tub, separate glass-enclosed shower and two large walk-in closets, one with access to utility room. First-floor guest suite. A game room, media room with French doors and two secondary bedrooms are upstairs. Covered backyard patio. Three-car garage.

Built in 2021

## Essential Information

MLS® #	446674
Price	\$715,900
Bedrooms	4
Bathrooms	4.00
Full Baths	3
Half Baths	1
Square Footage	3,396
Acres	0.01
Year Built	2021
Type	Residential



\*See Page 2 for Details and Disclosures | © Perry Homes, LLC | 10/13/2020 12:46:29 PM MST CL

PerryHomes.com

Page 1 of 2



Sub-Type	Single Family
Style	Traditional
Status	Active

### **Community Information**

Address	5393 Hartley Square
Subdivision	Homestead
City	Schertz
County	Guadalupe
State	Texas
Zip Code	78108

### **Amenities**

Utilities	Cable Available, High Speed Internet Available
Features	Playground, Community Pool, Curbs, Street Lights, Sidewalks, Clubhouse, Gutter(s), Park, Trails/Paths
Parking	Attached, Garage
# of Garages	3
Garages	Garage Door Opener
View	None

### **Interior**

Interior	Carpet, Ceramic Tile
Interior Features	Ceiling Fan(s), Double Vanity, Garden Tub/Roman Tub, Home Office, Pull Down Attic Stairs, Separate Shower, Kitchen Island, Pantry, Carbon Monoxide Detector, Game Room
Appliances	Dishwasher, Disposal, Microwave, Gas Water Heater, Some Gas Appliances, Tankless Water Heater
Heating	Central, Heat Pump, Natural Gas
Cooling	Central Air, 1 Unit
Fireplaces	None
# of Stories	2
Stories	Two

### **Exterior**

Exterior Features	Covered Patio, Rain Gutters
Lot Description	120x65
Roof	Composition, Shingle
Construction	Brick, Masonry, Stone Veneer

Foundation	Slab
------------	------

### **School Information**

District	Schertz-Cibolo Universal City ISD
Elementary	John A Sippel Elementary
Middle	Elaine S Schlather Intermediate School
High	Byron P Steele II High School

### **Additional Information**

Date Listed	July 26th, 2021
HOA Fees	927.00
HOA Fees Freq.	Annually

### **Listing Details**

Listing Office	Perry Development Mgt.
----------------	------------------------

The information being provided by the Central Texas MLS is exclusively for consumers' personal, non-commercial use, and it may not be used for any purpose other than to identify prospective properties consumers may be interested in purchasing. The data is deemed reliable but is not guaranteed accurate by the MLS.