

# \$2,500,000 - N/A, Bulverde

MLS® #446673

## \$2,500,000

0 Bedroom, 0.00 Bathroom, 1,200 sqft  
Land on 42.77 Acres

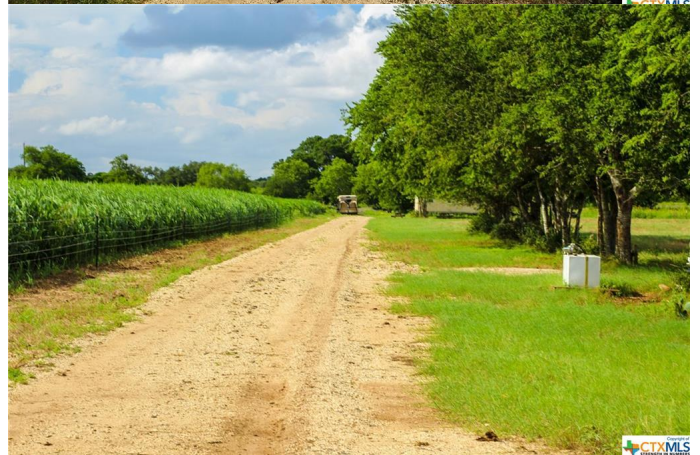
N/A, Bulverde, Texas

Ranch buyers and real estate investors looking for a private showplace near San Antonio and the US HWY 281 corridor will appreciate the Whiskey Ranch. Whiskey Ranch is conveniently located just 3 miles west of Bulverde, and 20 miles North of the San Antonio International Airport. Bulverde, TX is one of the fastest growing, culturally rich communities in the area due to its good schools, abundant attractions and easy commute to San Antonio.

The property is mostly flat, sloping slightly to the south and offers great views to the south toward 281 and San Antonio. It is very private and spacious, yet close to town and the amenities of upscale living. Kinder Elementary School is located just 2.5 miles south. It is just 19 miles to the shops at La Cantera, 12 miles to 1604, 20 miles to San Antonio International Airport, and just 2.5 miles to the Bulverde airport.

## Essential Information

MLS® #	446673
Price	\$2,500,000
Bathrooms	0.00
Square Footage	1,200
Acres	42.77
Type	Land
Sub-Type	Unimproved Land
Status	Active



## Community Information

Address	N/A
Subdivision	N/A
City	Bulverde
County	Comal
State	Texas
Zip Code	78163

## Amenities

Utilities	Other, See Remarks
Features	None
View	Meadow

## School Information

District	Comal ISD
----------	-----------

## Additional Information

Date Listed	July 26th, 2021
HOA Fees	0.00

## Listing Details

Listing Office	Keller Williams SW Market Cent
----------------	--------------------------------

The information being provided by the Central Texas MLS is exclusively for consumers' personal, non-commercial use, and it may not be used for any purpose other than to identify prospective properties consumers may be interested in purchasing. The data is deemed reliable but is not guaranteed accurate by the MLS.