

\$834,900 - 31098 Charolais Way, Bulverde

MLS® #446568

\$834,900

4 Bedroom, 4.00 Bathroom, 3,740 sqft
Residential on 0.29 Acres

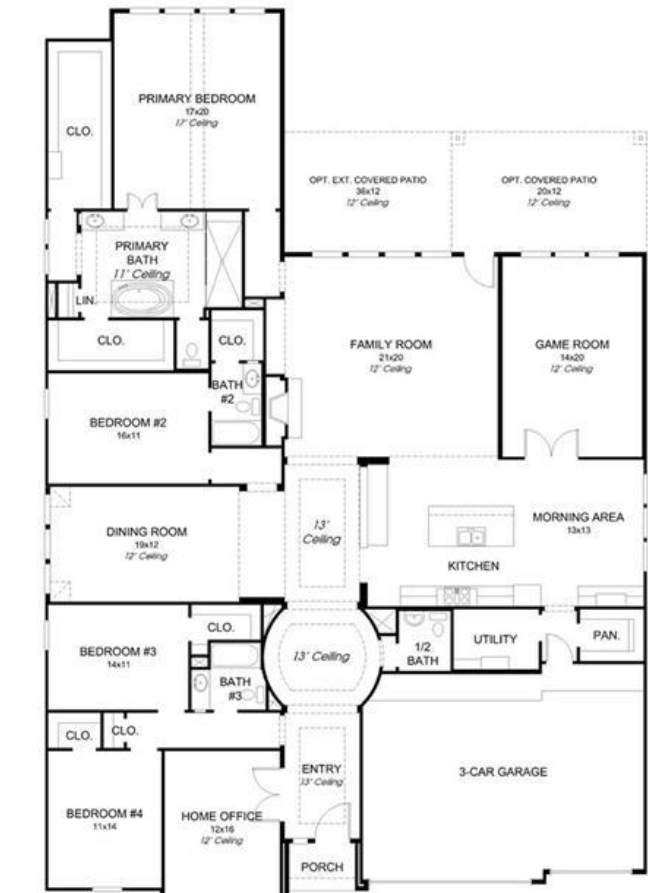
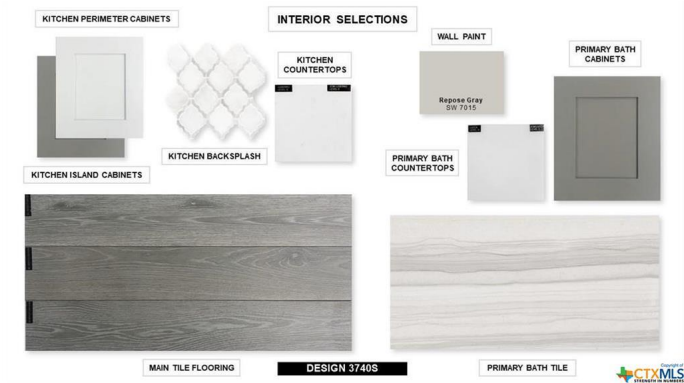
Johnson Ranch, Bulverde, Texas

Perry Homes New Construction! Home office with French doors set at French door entry. Formal dining room off extended entry. Open family room features a wood mantel fireplace and wall of windows. Island kitchen hosts inviting island with built-in seating space, double wall oven and a 5-burner gas cooktop. Game room with French doors off morning area. Primary suite features bedroom with curved wall of windows. Dual vanities, garden tub, separate glass-enclosed shower and two large walk-in closets in primary bath. High ceilings and a guest suite with private bath add to this spacious four-bedroom home. Extended covered backyard patio. Three-car garage.

Built in 2021

Essential Information

| | |
|----------------|---------------|
| MLS® # | 446568 |
| Price | \$834,900 |
| Bedrooms | 4 |
| Bathrooms | 4.00 |
| Full Baths | 3 |
| Half Baths | 1 |
| Square Footage | 3,740 |
| Acres | 0.29 |
| Year Built | 2021 |
| Type | Residential |
| Sub-Type | Single Family |
| Style | Hill Country |



Status Active

Community Information

Address 31098 Charolais Way
Subdivision Johnson Ranch
City Bulverde
County Comal
State Texas
Zip Code 78163

Amenities

Utilities Cable Available, High Speed Internet Available
Features Clubhouse, Playground, Park, Sport Court(s), Trails/Paths, Community Pool, Curbs, Gated, Sidewalks, Gutter(s)
Parking Attached, Garage
of Garages 3
Garages Garage Door Opener
View None

Interior

Interior Carpet, Ceramic Tile
Interior Features Ceiling Fan(s), Carbon Monoxide Detector, Separate/Formal Dining Room, Double Vanity, Game Room, Garden Tub/Roman Tub, His and Hers Closets, Home Office, Living/Dining Room, Open Floorplan, Pantry, Pull Down Attic Stairs, Separate Shower
Appliances Double Oven, Dishwasher, Gas Cooktop, Disposal, Microwave, Tankless Water Heater, Some Gas Appliances, Built-In Oven, Cooktop
Heating Central, Natural Gas
Cooling Central Air, 2 Units, Zoned
Fireplace Yes
of Fireplaces 1
Fireplaces Gas Log, Gas Starter
of Stories 1
Stories One

Exterior

Exterior Features Covered Patio, Rain Gutters
Lot Description 81x160
Roof Shingle, Wood
Construction Brick, Stone Veneer, Stucco

| | |
|------------|------|
| Foundation | Slab |
|------------|------|

School Information

| | |
|------------|--------------------------|
| District | Comal ISD |
| Elementary | Johnson Ranch Elementary |
| Middle | Smithson Valley |
| High | Smithson Valley High |

Additional Information

| | |
|----------------|-----------------|
| Date Listed | July 24th, 2021 |
| Days on Market | 3 |
| HOA Fees | 945.00 |
| HOA Fees Freq. | Annually |

Listing Details

| | |
|----------------|------------------------|
| Listing Office | Perry Development Mgt. |
|----------------|------------------------|

The information being provided by the Central Texas MLS is exclusively for consumers' personal, non-commercial use, and it may not be used for any purpose other than to identify prospective properties consumers may be interested in purchasing. The data is deemed reliable but is not guaranteed accurate by the MLS.