

\$369,218 - 5600 Respinto Drive, Austin

MLS® #443573

\$369,218

3 Bedroom, 3.00 Bathroom, 1,698 sqft
Residential on 0.13 Acres

Cloverleaf, Austin, Texas

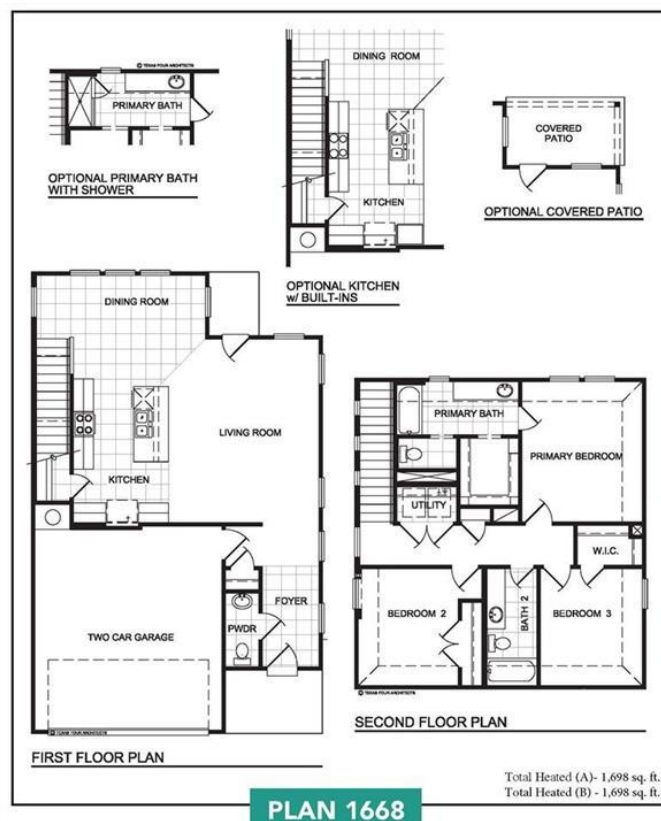
MLS# - Built by Brohn Homes - December
Completion ~ Waterloo by Brohn Homes



Built in 2021

Essential Information

MLS® #	443573
Price	\$369,218
Bedrooms	3
Bathrooms	3.00
Full Baths	2
Half Baths	1
Square Footage	1,698
Acres	0.13
Year Built	2021
Type	Residential
Sub-Type	Single Family
Style	Traditional
Status	Pending



Community Information

Address	5600 Respinto Drive
Subdivision	Cloverleaf
City	Austin
County	Travis
State	Texas
Zip Code	78747

Amenities

Utilities Electricity Available, Underground Utilities

Clayton Properties Group, Inc. Formerly known and Qualified to do business in Texas as CMH Parks Inc. DBA Brohn Homes reserves the right to make changes to pricing, floor plans, specifications, features, dimensions, elevations, and incentives without prior notice. Stated dimensions and square footages are approximate and should not be used as representation of the home's price or actual size. Copyright © 2014 Clayton Properties Group, Inc. Formerly known and Qualified to do business in Texas as CMH Parks Inc. DBA Brohn Homes.

Features	None
Parking	Attached, Garage
# of Garages	2
View	None

Interior

Interior	Carpet, Ceramic Tile
Interior Features	Kitchen Island, Pantry
Appliances	Dishwasher, Microwave
Heating	Central
Cooling	Central Air
Fireplaces	None
# of Stories	2
Stories	Two

Exterior

Exterior Features	Porch
Lot Description	50X125
Roof	Composition, Shingle
Construction	Brick Veneer, Radiant Barrier
Foundation	Slab

School Information

District	Austin ISD
----------	------------

Additional Information

Date Listed	June 25th, 2021
HOA Fees	100.00
HOA Fees Freq.	Quarterly

Listing Details

Listing Office	HomesUSA.com
----------------	--------------

The information being provided by the Central Texas MLS is exclusively for consumers' personal, non-commercial use, and it may not be used for any purpose other than to identify prospective properties consumers may be interested in purchasing. The data is deemed reliable but is not guaranteed accurate by the MLS.