

\$337,813 - 5716 Respinto Drive, Austin

MLS® #443035

\$337,813

3 Bedroom, 2.00 Bathroom, 1,450 sqft
Residential on 0.21 Acres

Cloverleaf, Austin, Texas

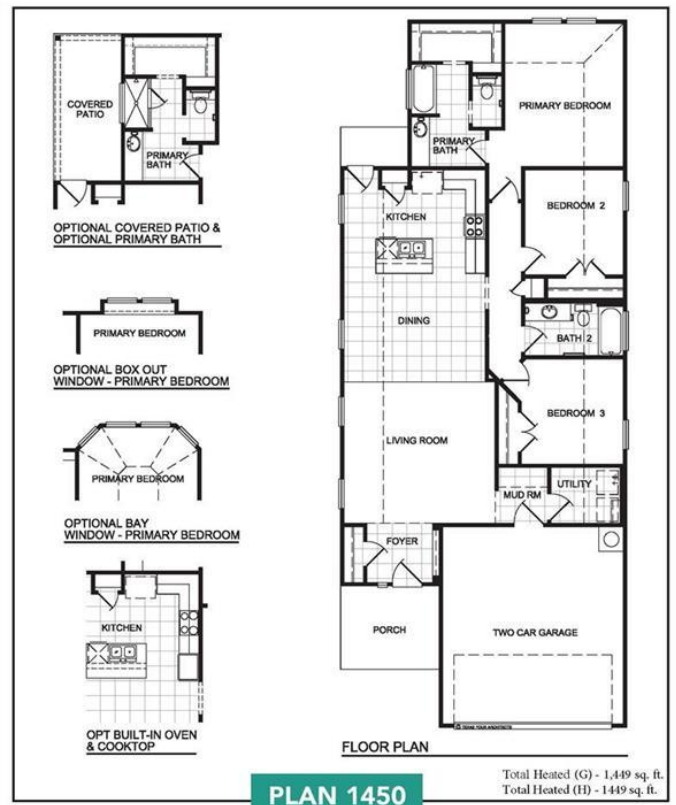
MLS# 443035 - Built by Brohn Homes -
January completion! ~ 1 story home in
Cloverleaf community.



Built in 2021

Essential Information

MLS® #	443035
Price	\$337,813
Bedrooms	3
Bathrooms	2.00
Full Baths	2
Square Footage	1,450
Acres	0.21
Year Built	2021
Type	Residential
Sub-Type	Single Family
Style	Traditional
Status	Pending



Community Information

Address	5716 Respinto Drive
Subdivision	Cloverleaf
City	Austin
County	Travis
State	Texas
Zip Code	78747

Amenities

Utilities Cable Available, Electricity Available, Natural Gas Available,

Clayton Properties Group, Inc. Formerly known and Qualified to do business in Texas as CMH Parks Inc. DBA Brohn Homes reserves the right to make changes to pricing, floor plans, specifications, features, dimensions, elevations, and incentives without prior notice. Stated dimensions and square footages are approximate and should not be used as representation of the home's precise or actual size. Copyright © 2014 Clayton Properties Group, Inc. Formerly known and Qualified to do business in Texas as CMH Parks Inc. DBA Brohn Homes.

	Underground Utilities
Features	Park
Parking	Attached, Garage
# of Garages	2
View	None

Interior

Interior	Carpet, Tile
Interior Features	Recessed Lighting, Tub Shower, Kitchen Island, Pantry
Appliances	Dishwasher, Gas Range, Gas Water Heater, Microwave
Heating	Central
Cooling	Central Air
Fireplaces	None
# of Stories	1
Stories	One

Exterior

Lot Description	75X120
Windows	Double Pane Windows
Roof	Composition, Shingle
Construction	HardiPlank Type
Foundation	Slab

School Information

District	Austin ISD
Elementary	Blazier Elementary School
Middle	Paredes Middle School
High	Akins High School

Additional Information

Date Listed	June 21st, 2021
HOA Fees	100.00
HOA Fees Freq.	Quarterly

Listing Details

Listing Office	HomesUSA.com
----------------	--------------

The information being provided by the Central Texas MLS is exclusively for consumers' personal, non-commercial use, and it may not be used for any purpose other than to identify prospective properties consumers may be interested in purchasing. The data is deemed reliable but is not guaranteed accurate by the MLS.