

# \$269,900 - 7531 Clyde Drive, Temple

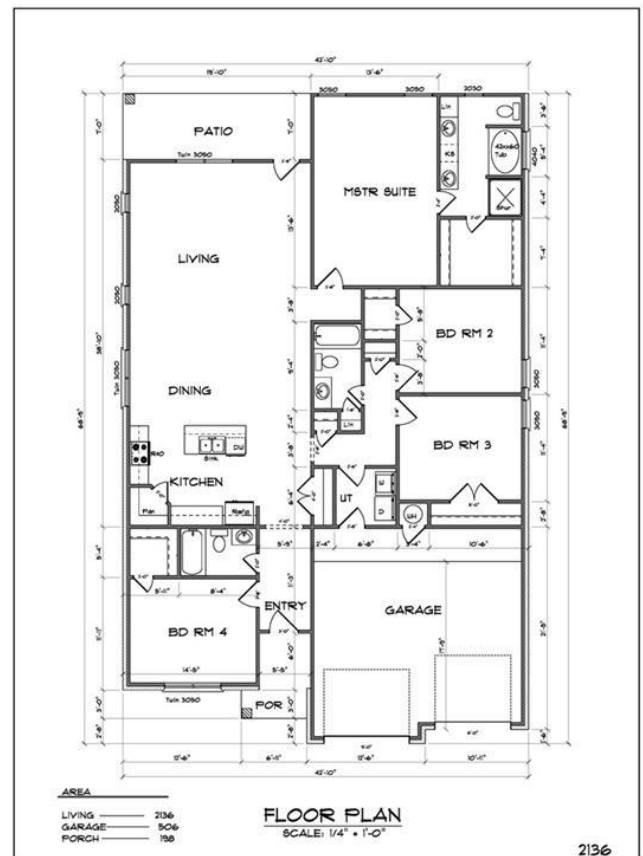
MLS® #433516

## \$269,900

4 Bedroom, 3.00 Bathroom, 2,136 sqft  
Residential on 0.20 Acres

The Reserve at Pea Ridge PHASE 2, Temple, Texas

Another stunning home from Jerry Wright Homes, Inc! Four bedrooms, THREE baths are in high demand right now and here's your chance!! One bedroom and bath are near the front of the home, while two bedrooms and a bath are down a private hallway. And of course the primary bedroom boasts a gorgeous owner's bath featuring a deep cultured marble soaking tub and a separate ceramic tiled shower. You can still choose everything for the interior of this home.. Standard features include granite in kitchen and baths, stainless appliances, tall custom cabinetry, luxury height double vanity, beautiful flooring selections and all sorts of ceramic tile selections for kitchen and baths. Call now to get a standard features list! Please note that all measurements are estimates.



Built in 2021

## Essential Information

MLS® #	433516
Price	\$269,900
Bedrooms	4
Bathrooms	3.00
Full Baths	3
Square Footage	2,136
Acres	0.20
Year Built	2021

Type	Residential
Sub-Type	Single Family
Style	Ranch, Traditional
Status	Pending

### Community Information

Address	7531 Clyde Drive
Subdivision	The Reserve at Pea Ridge PHASE 2
City	Temple
County	Bell
State	Texas
Zip Code	76502

### Amenities

Utilities	Electricity Available, Underground Utilities
Features	None, Curbs, Street Lights
# of Garages	2
View	None

### Interior

Interior	Carpet, Ceramic Tile
Interior Features	Ceiling Fan(s), Crown Molding, Double Vanity, Garden Tub/Roman Tub, Kitchen Island, Open Floorplan, Pantry, Pull Down Attic Stairs, Recessed Lighting, Split Bedrooms, Separate Shower, Breakfast Area
Appliances	Dishwasher, Electric Cooktop, Electric Water Heater, Disposal, Oven, Plumbed For Ice Maker, Water Heater, Some Electric Appliances, Built-In Oven, Cooktop, Microwave
Heating	Central, Electric, Heat Pump
Cooling	Central Air, Electric, Heat Pump, 1 Unit
Fireplaces	None
# of Stories	1
Stories	One

### Exterior

Exterior Features	Covered Patio, Porch, Security Lighting
Roof	Composition, Shingle
Construction	Batts Insulation, Blown-In Insulation, Brick Veneer, Masonry, Stone Veneer
Foundation	Slab

## **School Information**

District                      Belton ISD

## **Additional Information**

Date Listed                March 8th, 2021

Days on Market        17

HOA Fees                120.00

HOA Fees Freq.        Annually

## **Listing Details**

Listing Office            Coldwell Banker Realty

The information being provided by the Central Texas MLS is exclusively for consumers' personal, non-commercial use, and it may not be used for any purpose other than to identify prospective properties consumers may be interested in purchasing. The data is deemed reliable but is not guaranteed accurate by the MLS.