

\$205,475 - 307 Paddock Lane, Killeen

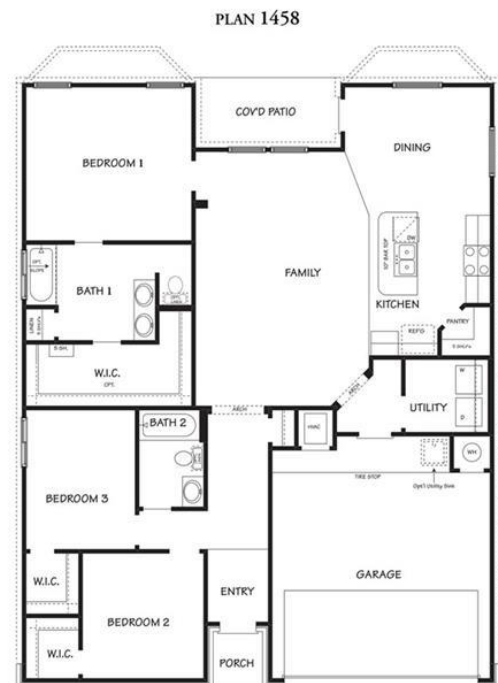
MLS® #431610

\$205,475

3 Bedroom, 2.00 Bathroom, 1,508 sqft
Residential on 0.17 Acres

N/A, Killeen, Texas

The Alpine is a single-story, 1508 approximate square foot, 3-bedroom, 2-bathroom, 2 car garage home. Designed with you and your family in mind, this layout features a separate dining space that leads to an open kitchen. Bedroom 1 is located off the family room and features a beautiful bay window, double vanity and spacious walk-in closet with plenty of room for storage. The Alpine is one of our most popular plans and is a perfect starter home for a single adult, couple or small family. Other Features include: 9-foot ceilings, granite counter tops in the kitchen and stainless appliances. Youâ€™™ll enjoy added security in your new DR Horton home with our Home is Connected features. Using one central hub that talks to all the devices in your home, you can control the lights, thermostat and locks, all from your cellular device. DR Horton also includes an Amazon Echo Dot to make voice activation a reality in your new Smart Home. Available features listed on select homes only.



FLOORPLAN

Floor plans / elevations will vary slightly and are intended only as an artistic conception. They are not to be used in reference to final construction drawings or detailed elevational elements. Actual materials will vary; builder reserves the right to make changes at any time without prior notice. See your sales representative for details.

10/17



Built in 2021

Essential Information

MLS® #	431610
Price	\$205,475
Bedrooms	3
Bathrooms	2.00
Full Baths	2
Square Footage	1,508

Acres	0.17
Year Built	2021
Type	Residential
Sub-Type	Single Family
Style	Other
Status	Pending

Community Information

Address	307 Paddock Lane
Subdivision	N/A
City	Killeen
County	Bell
State	Texas
Zip Code	76542

Amenities

Utilities	Other, See Remarks
Features	Other, See Remarks
# of Garages	2
View	None

Interior

Interior Features	Other
Appliances	Other, See Remarks
Heating	Other, See Remarks
Fireplaces	Other, See Remarks
# of Stories	1
Stories	One

Exterior

Exterior Features	Other, See Remarks
Roof	Other, See Remarks
Construction	Other, See Remarks
Foundation	Other, See Remarks

School Information

District	Killeen ISD
Elementary	Alice W. Douse Elementary School
Middle	Patterson Middle School

High Ellison High School

Additional Information

Date Listed February 5th, 2021

Days on Market 28

HOA Fees 0.00

Listing Details

Listing Office NextHome Tropicana Realty

The information being provided by the Central Texas MLS is exclusively for consumers' personal, non-commercial use, and it may not be used for any purpose other than to identify prospective properties consumers may be interested in purchasing. The data is deemed reliable but is not guaranteed accurate by the MLS.