

\$89,900 - 1191 Eagle Point Drive, Fischer

MLS® #424645

\$89,900

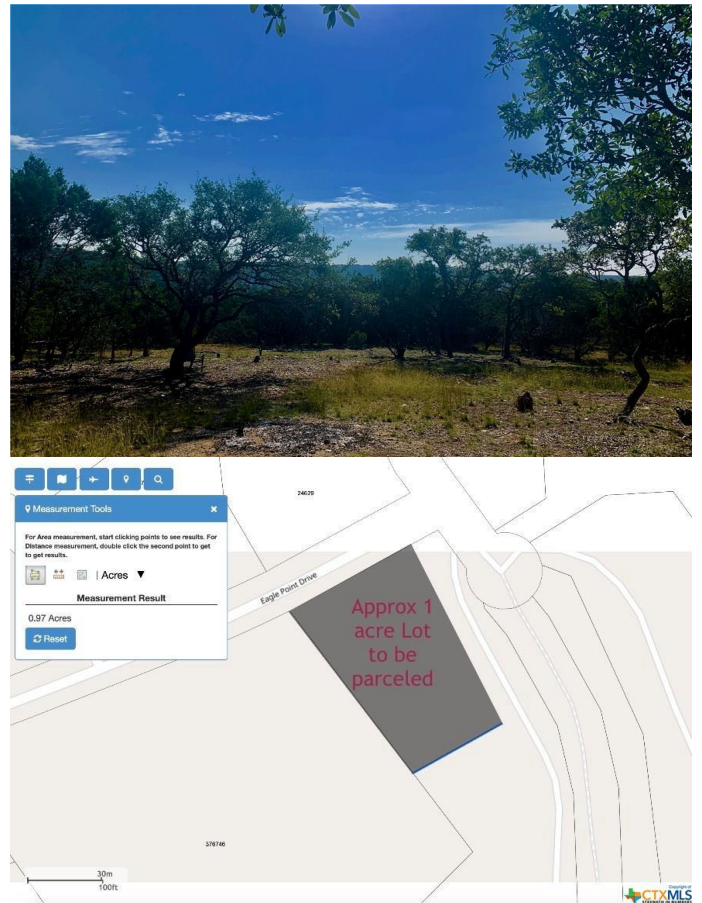
0 Bedroom, 0.00 Bathroom,
Land on 1.00 Acres

N/A, Fischer, Texas

BUILD YOUR DREAM HOME on secluded, approximately one acre of beautiful, level, property with fabulous hill country views and mature Live Oaks just minutes from Canyon Lake and the north shore amenities and boat ramps! This corner lot is being surveyed out of a larger ranch parcel near the corner of Eagle Point Drive and Sundown Trail with multiple ranch properties nearby so neighbors are spaced out offering lots of privacy and amazing views. The lot faces Eagle Point Drive and a ranch entrance borders the north side (Sundown Side). The rear of your home will face east giving you cooler afternoons and gorgeous sunrises over the hilltops in the distance. Some clearing has been done revealing the mature Live Oaks and potential build site. This property borders the Eagle's Peak subdivision and they have approved water utility access from the private Eagle Peak Ranch Water Supply service for the new owners. Seller in process of surveying the lot and new address.

Essential Information

MLS® #	424645
Price	\$89,900
Bathrooms	0.00
Acres	1.00
Type	Land
Sub-Type	Residential



Status	Pending
--------	---------

Community Information

Address	1191 Eagle Point Drive
Subdivision	N/A
City	Fischer
County	Comal
State	Texas
Zip Code	78623

Amenities

Utilities	Electricity Available
Features	None
View	Hills, Panoramic, River

School Information

District	Comal ISD
----------	-----------

Additional Information

Date Listed	October 19th, 2020
Days on Market	53
HOA Fees	0.00

Listing Details

Listing Office	Elite Agents
----------------	--------------

The information being provided by the Central Texas MLS is exclusively for consumers' personal, non-commercial use, and it may not be used for any purpose other than to identify prospective properties consumers may be interested in purchasing. The data is deemed reliable but is not guaranteed accurate by the MLS.