

\$175,000 - 102 & 106 W Pierce Street, Luling

MLS® #403651

\$175,000

0 Bedroom, 0.00 Bathroom, 572 sqft
Commercial Sale on 0.45 Acres

O T Luling, Luling, Texas

Prime location for your commercial business! Zoned C-2, this corner lot features approximately 150 feet frontage along Highway 90/Pierce Street in Luling. High traffic counts with close proximity to Luling School District, H-E-B, Apple Lumber, and Downtown Luling. Currently 2 buildings reside on the property - approximately 572 sq ft and 1406 sq ft. One has been used recently for different businesses including restaurants, bars, and recreational game rooms.

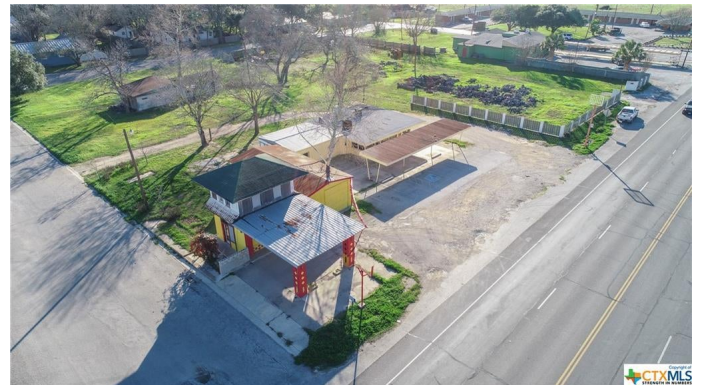
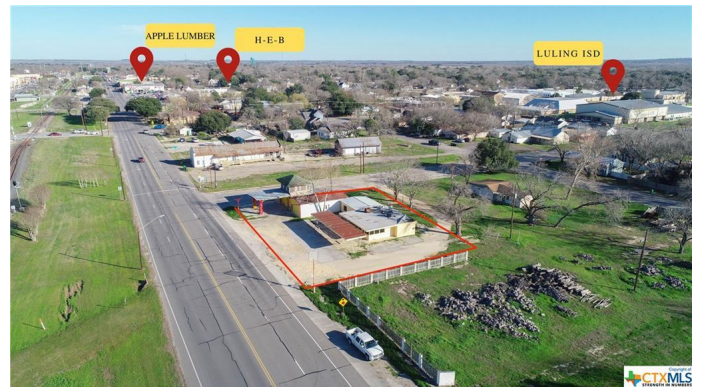
Built in 1930

Essential Information

MLS® #	403651
Price	\$175,000
Bathrooms	0.00
Square Footage	572
Acres	0.45
Year Built	1930
Type	Commercial Sale
Sub-Type	Commercial
Status	Active

Community Information

Address	102 & 106 W Pierce Street
Subdivision	O T Luling
City	Luling
County	Caldwell
State	Texas



Zip Code	78648
----------	-------

Amenities

Amenities	None
Utilities	Electricity Available, Natural Gas Available
Features	None
Parking	Parking Space(s)
View	None

Interior

Interior	Concrete
Heating	Other, See Remarks
Cooling	Other, See Remarks
# of Stories	1
Stories	One, Other

Exterior

Lot Description	150'x130'
Roof	Metal
Construction	Masonry
Foundation	Slab

School Information

District	Luling ISD
Elementary	Leonard Shanklin Elementary
Middle	Luling Junior High School
High	Luling High School

Additional Information

Date Listed	March 7th, 2020
Days on Market	510
Zoning	C2
HOA Fees	0.00

Listing Details

Listing Office	Lloyd Barnes Real Estate Team
----------------	-------------------------------

The information being provided by the Central Texas MLS is exclusively for consumers' personal, non-commercial use, and it may not be used for any purpose other than to identify prospective properties consumers may be interested in purchasing. The data is deemed reliable but is not guaranteed accurate by the MLS.