

\$625 - 3403 Victoria Circle B, Killeen

MLS® #381851

\$625

2 Bedroom, 2.00 Bathroom, 4,848 sqft
Residential Lease on 0.21 Acres

Plantation Oaks Sub, Killeen, Texas

Built in 1984

Essential Information

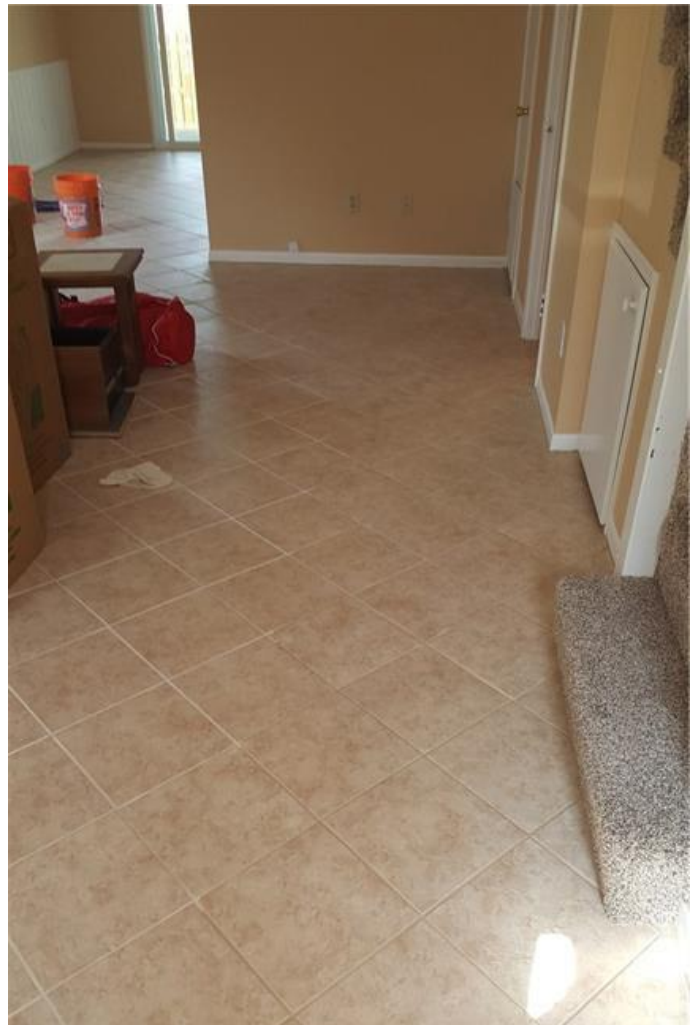
MLS® #	381851
Price	\$625
Bedrooms	2
Bathrooms	2.00
Full Baths	1
Half Baths	1
Square Footage	4,848
Acres	0.21
Year Built	1984
Type	Residential Lease
Sub-Type	Quadruplex
Status	Pending

Community Information

Address	3403 Victoria Circle B
Subdivision	Plantation Oaks Sub
City	Killeen
County	Bell
State	Texas
Zip Code	76543

Amenities

Utilities	None
Features	None



View None

Interior

Interior Carpet, Tile

Interior Features Ceiling Fan(s), Tub Shower, Window Treatments, Breakfast Area, Kitchen Island

Appliances Some Electric Appliances, Dishwasher, Disposal, Microwave, Range, Refrigerator, Stove

Heating Central

Cooling Central Air, Ceiling Fan(s)

Fireplaces None

of Stories 2

Stories Two

Exterior

Exterior Features Patio

Windows Window Treatments

Roof Shingle

Construction HardiPlank Type

Foundation Slab

School Information

District Killeen ISD

Additional Information

Date Listed June 12th, 2019

Days on Market 5

HOA Fees 0.00

Listing Details

Listing Office Schramm Real Estate, PLLC

The information being provided by the Central Texas MLS is exclusively for consumers' personal, non-commercial use, and it may not be used for any purpose other than to identify prospective properties consumers may be interested in purchasing. The data is deemed reliable but is not guaranteed accurate by the MLS.