

\$609,900 - 25519 River Ledge, San Antonio

MLS® #379416

\$609,900

5 Bedroom, 2.00 Bathroom, 4,891 sqft
Residential on 0.01 Acres

River Rock Ranch, San Antonio, Texas

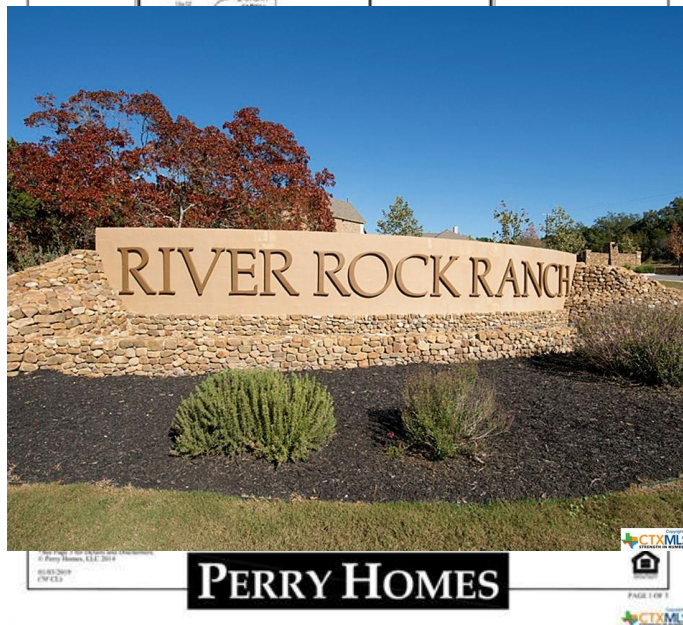
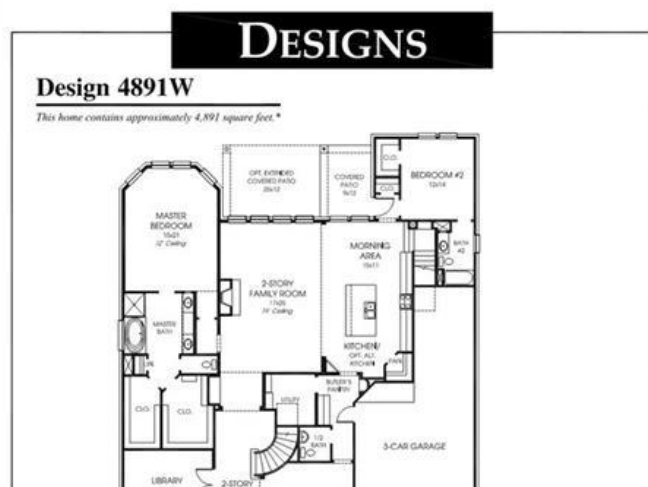
PERRY HOMES NEW CONSTRUCTION!

Double mahogany front doors. Library with French doors and dining room, both with hardwood floors. Two-story family room with wall of windows opens to kitchen and morning area. Kitchen features island with built-in seating space. Butler's pantry. Upstairs media room and game room. Hollywood bath. Downstairs guest suite with full bath and walk-in closet. Garden tub, separate shower and two walk-in closets in the master suite. Additional staircase just off morning area. Extended covered backyard patio. Sprinkler system. Three-car garage with porte-cochere. This home is in the cornice stages of construction as of May 20, 2019.

Built in 2019

Essential Information

MLS® #	379416
Price	\$609,900
Bedrooms	5
Bathrooms	2.00
Full Baths	1
Half Baths	1
Square Footage	4,891
Acres	0.01
Year Built	2019
Type	Residential
Sub-Type	Single Family



Style Traditional
Status Active

Community Information

Address 25519 River Ledge
Subdivision River Rock Ranch
City San Antonio
County Bexar
State Texas
Zip Code 78255

Amenities

Amenities Controlled Access
Utilities Cable Available, High Speed Internet Available
Features Clubhouse, Park, Pool, Curbs, Sidewalks
Parking Three or more Spaces
of Garages 3
Garages Three Car Garage, Attached Garage
View None

Interior

Interior Carpet, Hardwood, Tile
Interior Features Ceiling Fan(s), Carbon Monoxide Detector, Separate/Formal Dining Room, Game Room, Garden Tub/Roman Tub, Home Office, Pantry, Separate Shower, Breakfast Area, Eat-in Kitchen, Kitchen Island
Appliances Some Gas Appliances, Dishwasher, Disposal, Microwave, Stove
Heating Central, Gas
Cooling Central Air, 2 Units, Ceiling Fan(s)
Fireplace Yes
Fireplaces Gas, Gas Log, Gas Starter
of Stories 2
Stories Two

Exterior

Exterior Features Sprinkler/Irrigation, Rain Gutters, Covered Patio
Lot Description 70x120
Roof Shingle
Construction Brick, Masonry, Rock, Stone Veneer
Foundation Slab

School Information

District	Northside ISD
Elementary	McAndrew Elementary School
Middle	Rawlinson Middle School
High	Clark High School

Additional Information

Date Listed	May 20th, 2019
Days on Market	88
HOA Fees	700.00
HOA Fees Freq.	Annually

Listing Details

Listing Office	Perry Development Mgt.
----------------	------------------------

The information being provided by the Central Texas MLS is exclusively for consumers' personal, non-commercial use, and it may not be used for any purpose other than to identify prospective properties consumers may be interested in purchasing. The data is deemed reliable but is not guaranteed accurate by the MLS.