

# \$3,420,157 - Ih-10 E Us Hwy 90 Highway, Seguin

MLS® #321266

## \$3,420,157

0 Bedroom, 0.00 Bathroom,  
Commercial Sale on 34.90 Acres

Dykstra Park, Brode Addn., Seguin, Texas

Prime 34+ acres fronting Interstate 10 east of Seguin near Texas Toll Road 130 to Austin. Excellent traffic and visibility. 1600+ feet IH-10 access road frontage and 1600+ feet US Hwy 90 frontage.

## Essential Information

MLS® #	321266
Price	\$3,420,157
Bathrooms	0.00
Acres	34.90
Type	Commercial Sale
Sub-Type	Commercial
Status	Pending

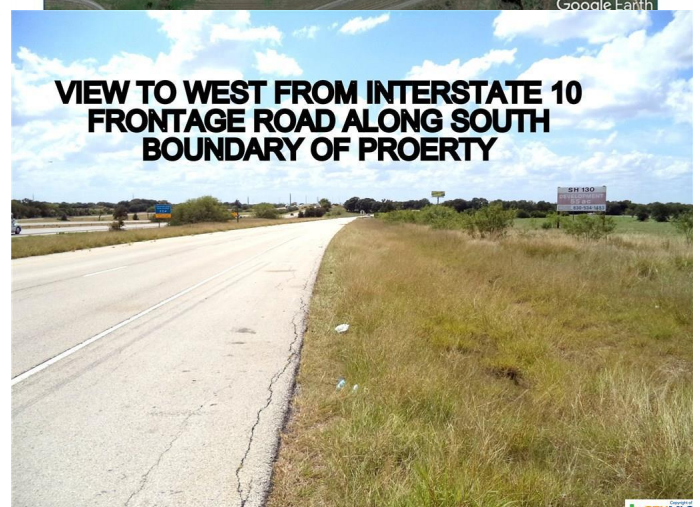
## Community Information

Address	Ih-10 E Us Hwy 90 Highway
Subdivision	Dykstra Park, Brode Addn.
City	Seguin
County	Guadalupe
State	Texas
Zip Code	78155

## Amenities

Amenities	None
Features	None
Parking	None
View	None

## Interior



Heating	None
Cooling	None
Stories	None

### **Exterior**

Roof	Other, See Remarks
Foundation	None

### **School Information**

District	Seguin ISD
High	Seguin High School

### **Additional Information**

Date Listed	August 22nd, 2017
Days on Market	1438
Zoning	C
HOA Fees	0.00

### **Listing Details**

Listing Office	Tarpon Blue Real Estate
----------------	-------------------------

The information being provided by the Central Texas MLS is exclusively for consumers' personal, non-commercial use, and it may not be used for any purpose other than to identify prospective properties consumers may be interested in purchasing. The data is deemed reliable but is not guaranteed accurate by the MLS.