

SAMSUNG

Samsung begins gearing up for new plant

Chip maker starts to hire and train some workers as construction moves ahead.

By [Kirk Ladendorf](#)
AMERICAN-STATESMAN STAFF
Thursday, June 29, 2006

Samsung Electronics Co. is moving full-speed ahead on the construction of its second Austin semiconductor factory, which will be known as Austin Fab 2, or A².

The building shell of the massive project is expected to be completed in June 2007, with the installation of equipment coming sometime after that. The start of memory-chip production in the factory is estimated to happen in late 2007 or 2008.

Samsung acknowledges that the Austin project is big, but the company has been reluctant to say exactly how big.

"It is going to be one of the largest fabs in the United States," company spokesman Bill Cryer said.

The company has said the new building's footprint will cover an area the size of nine football fields.

The new factory, which will process silicon wafers that are 300 millimeters (roughly 12 inches) in diameter, is expected to be about three times the size of the company's existing factory in Northeast Austin.

The new fab will be the first new chip factory in Central Texas in a decade. Only Samsung, Freescale Semiconductor Inc., Spansion Inc. and Cypress Semiconductor Corp. still make chips here.

Five fabs have been closed since 2001. Samsung built the most recent fab with its original plant in 1997.

The original projections for the cost of the new factory were \$3.5 billion, and some industry analysts

expect the project will cost more.

Samsung isn't giving a price tag for the project yet.

The new factory is expected to employ about 900 people including Samsung employees and workers from supplier companies.

Samsung already has begun hiring workers for the project.

"We are recruiting aggressively," Cryer said.

A recent help-wanted advertisement said the company is hiring to fill a variety of engineering and technician positions, as well as human resources and training jobs.

More than 100 engineers hired for the new factory are in training in South Korea this summer at Samsung's existing factories for 300-millimeter silicon wafers.

The complexity of the new technology requires extensive training, said Cryer, who said he expects virtually all the new factory's engineers to receive some training in South Korea. They will spend months setting up the equipment and assembly lines within the building.

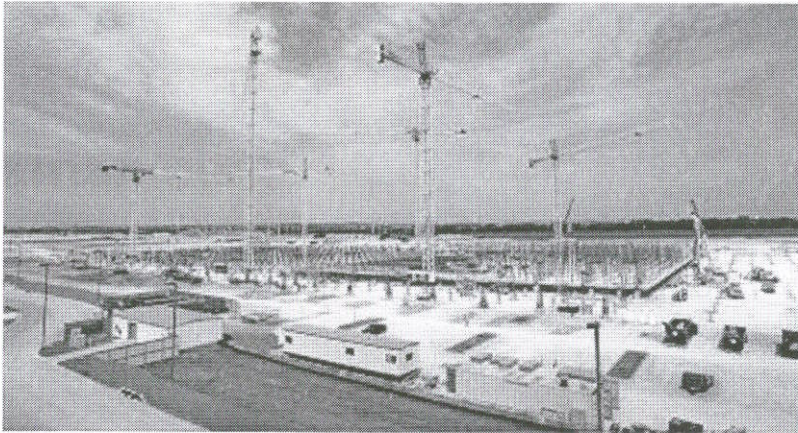
Hensel Phelps Construction Co. is the local contractor for the project, and Samsung Engineering and Construction is the general contractor. The architect for the project is Page Southerland Page LLC.

kladendorf@statesman.com; 445-3622

Find this article at:

<http://www.statesman.com/business/content/business/stories/technology/06/29samsung.html>

Check the box to include the list of links referenced in the article.



Jay Janner

AMERICAN-STATESMAN

Samsung's new chip plant going up in Northeast Austin, seen from Parmer Lane, is expected to cover an area the size of nine football fields.

Find this article at:

http://www.statesman.com/business/content/business/stories/technology/06/Samsung_jwj_Samsung_004.html

Check the box to include the list of links referenced in the article.