

## Central Texas Economy in Perspective

By Beverly Kerr, Chamber Vice President of Research  
 October 26, 2010 edition

**For the fifth month in a row, Austin takes first place in a ranking of the 50 largest metros based on the percent increase in payroll jobs over the preceding 12 months.**

### Best Performing Among Top 50 Metro Areas

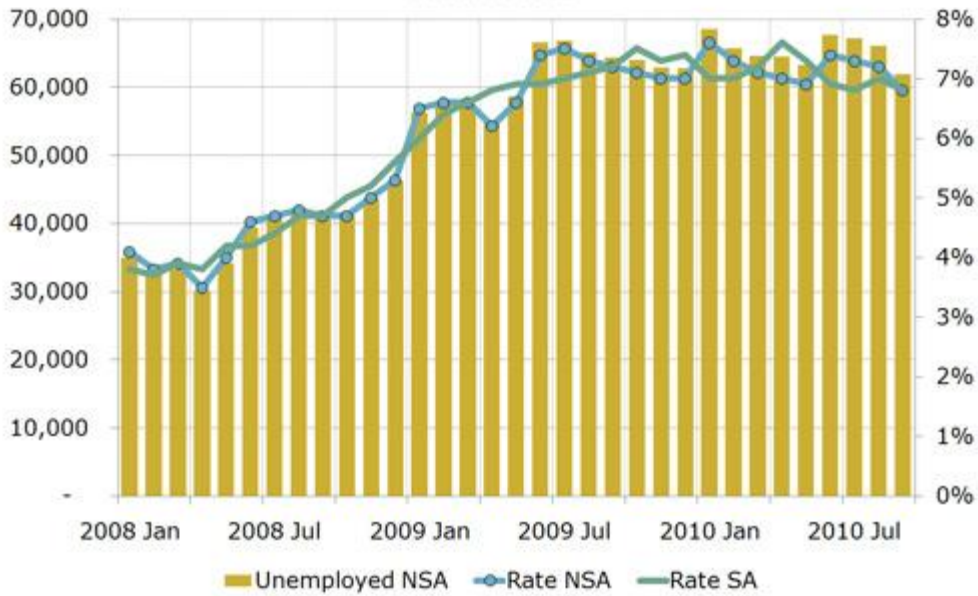
	Nonfarm jobs Sep. 2010	Sep. '09-Sep. '10 Difference	% Ch.	Rank
Austin MDiv	771,200	17,300	2.3%	1
Washington MDiv	2,419,200	47,800	2.0	2
Baltimore MSA	1,279,900	13,000	1.0	3
Dallas MDiv	2,018,000	20,200	1.0	4
Santa Ana MDiv	1,358,500	13,400	1.0	5
Fort Worth MDiv	849,500	7,800	0.9	6
Cleveland MSA	1,003,700	9,000	0.9	7
Phoenix MSA	1,704,500	15,100	0.9	8
Virginia Beach MSA	743,600	6,200	0.8	9
Charlotte MSA	811,800	6,700	0.8	10

*Austin is the 42<sup>nd</sup> largest metro based on nonfarm jobs in September.  
 Data is not seasonally adjusted.*

Source: U.S. Bureau of Labor Statistics.

Unemployment numbers for September show Austin's performance relative to the state and other major Texas metros being sustained. In September, **Austin is at 6.8%**, while the other major metros range from 7.2% in San Antonio to 8.2% in Houston. The rates are 7.9% in Dallas and Fort Worth. **The national rate is 9.2%**. Austin's rate one year ago was 7.2% and Dallas and Fort Worth's rates are 3 to 4 points below last September. Houston and San Antonio's rates are at or about the level of a year ago. Texas rate, now 7.9%, was 8.1% this time last year.

# Unemployment Austin MSA



Source: Texas Workforce Commission & Federal Reserve Board of Dallas, Local Area Unemployment statistics.

Courtesy of JB Goodwin